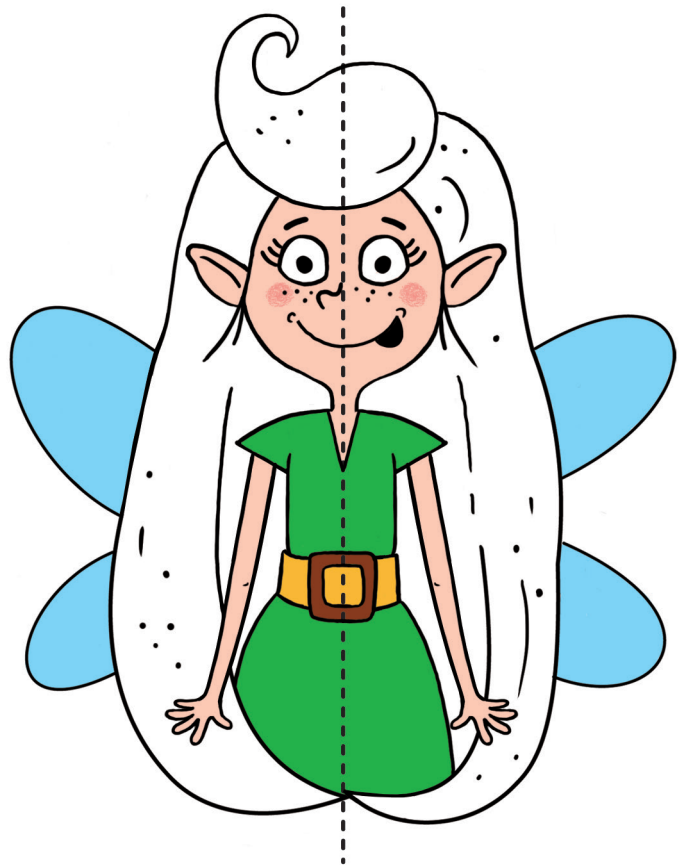
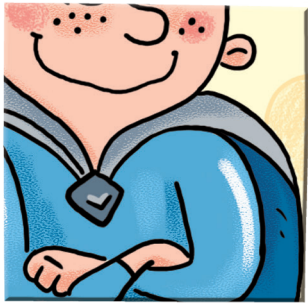
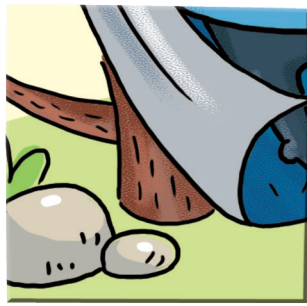
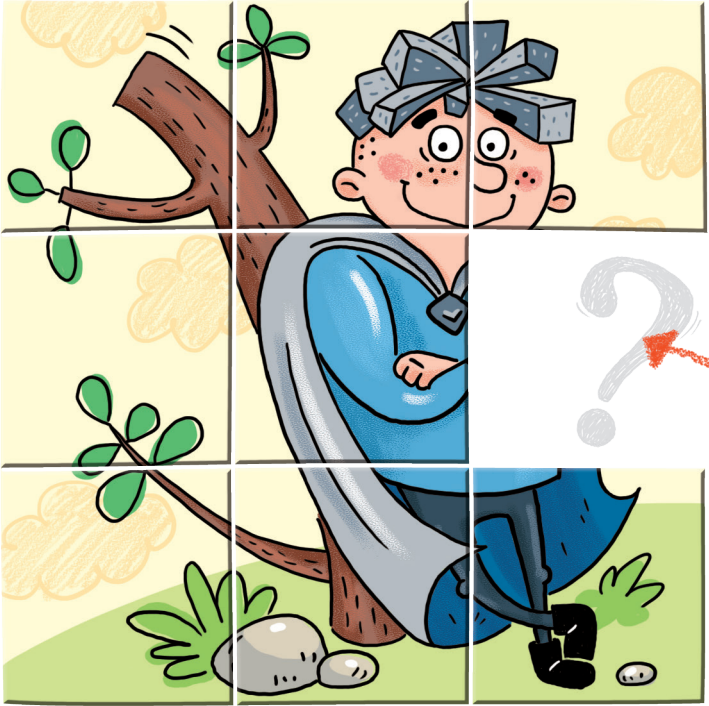




1   

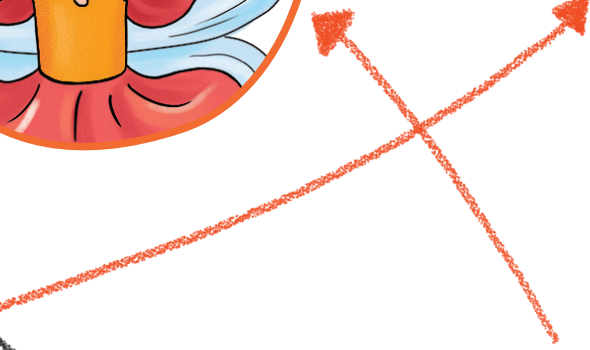
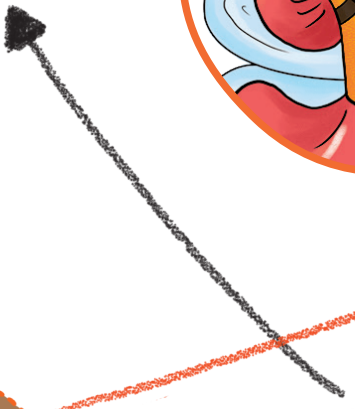






1A Meet our Friends

1   





1A Meet our Friends



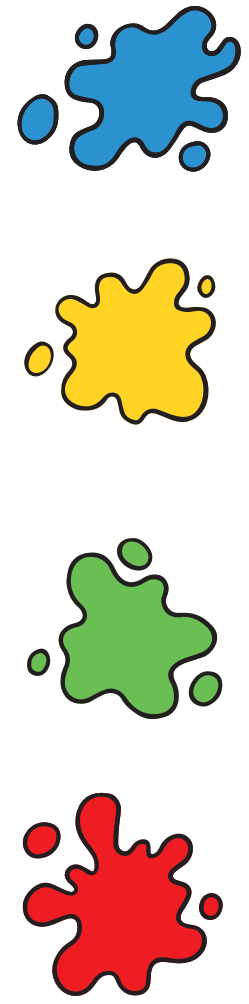
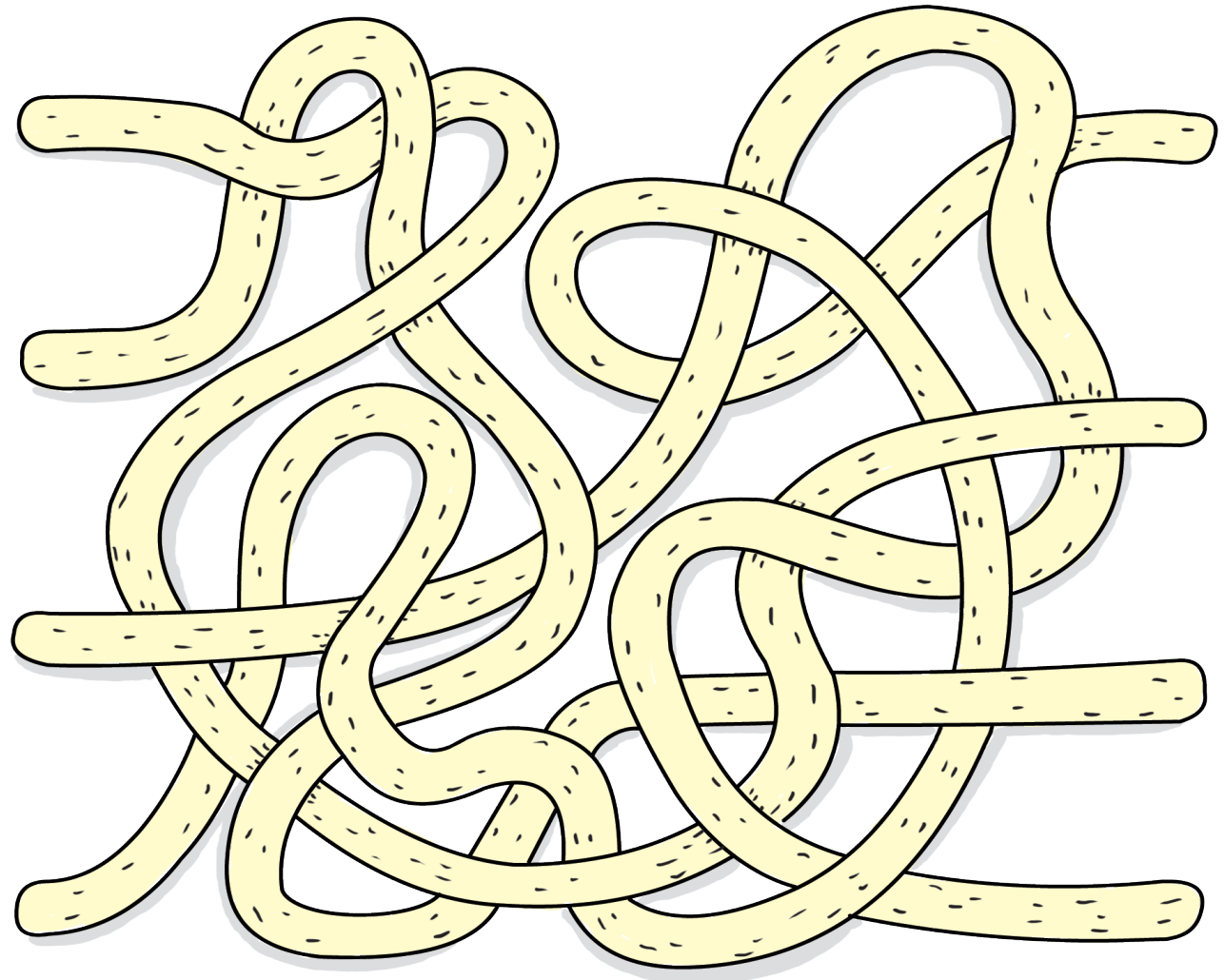
2





1B Meet our Friends

1









1B Meet our Friends

2



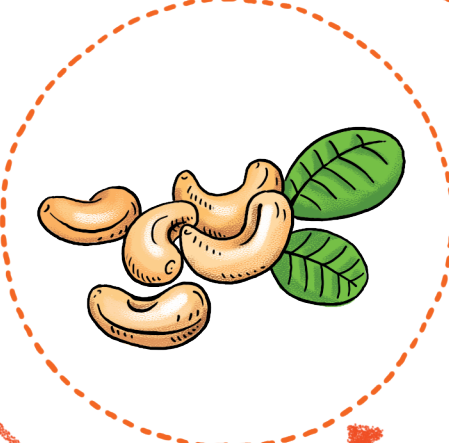
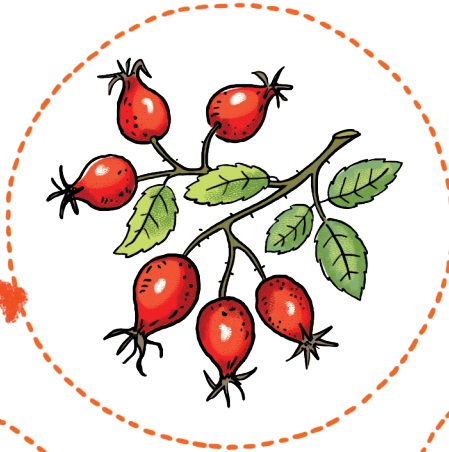
-  ○
-  +
-  □
-  △





1C Meet our Friends

1



6

2

5

1

4



3





1C Meet our Friends

2  

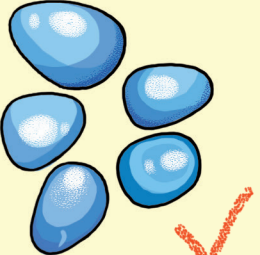
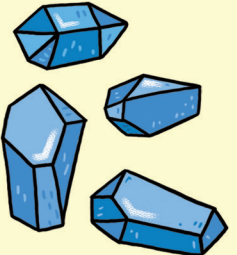
1

	
--	---

2



	
--	---

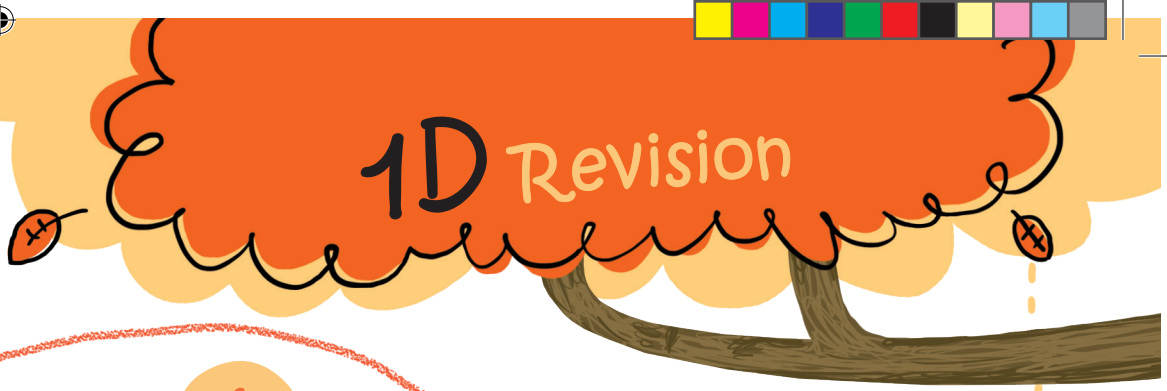
3

	
--	--



4

	
--	---



1D Revision

1



3

4

2

5

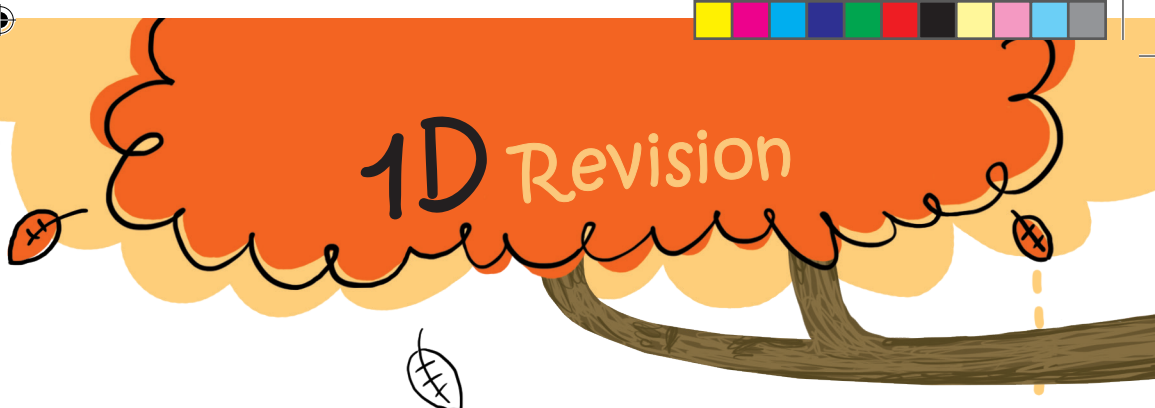
1

6

4



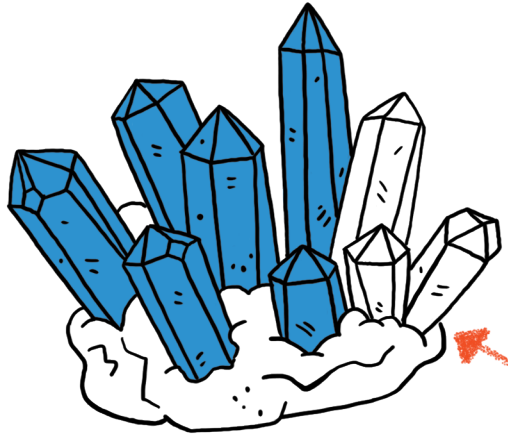
A 5x8 grid of illustrations for a 1D classification task. The grid contains 40 items: 20 acorns and 20 leaves. The items are arranged in a pattern that is mostly regular but includes several anomalies. Red dashed lines and arrows group the items into six categories, labeled 1 through 6. Category 1 (left) contains 1 acorn. Category 2 (top-left) contains 3 acorns. Category 3 (top) contains 4 items: 2 acorns and 2 leaves. Category 4 (bottom) contains 4 items: 2 acorns and 2 leaves. Category 5 (right) contains 3 acorns. Category 6 (bottom-right) contains 1 acorn. Additionally, four acorns are circled in red with a red 'X' over them, indicating they do not belong to any of the six groups.



1D Revision

2   

6



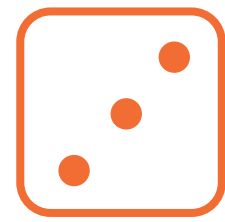
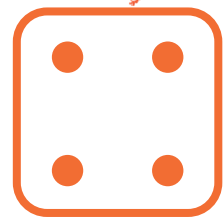
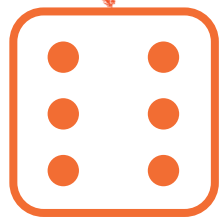
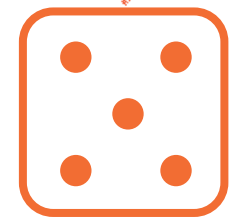
5



3

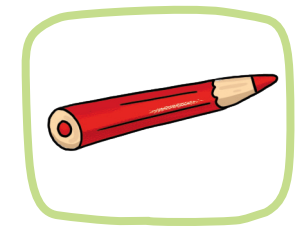
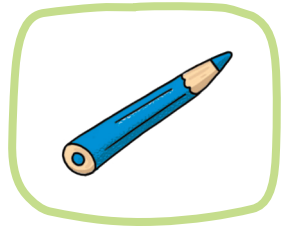


4

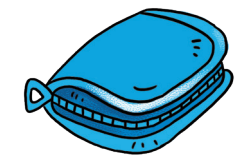
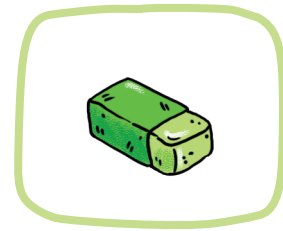




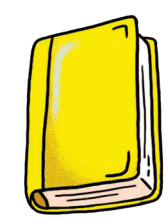
1



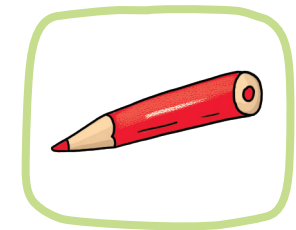
2



3



4





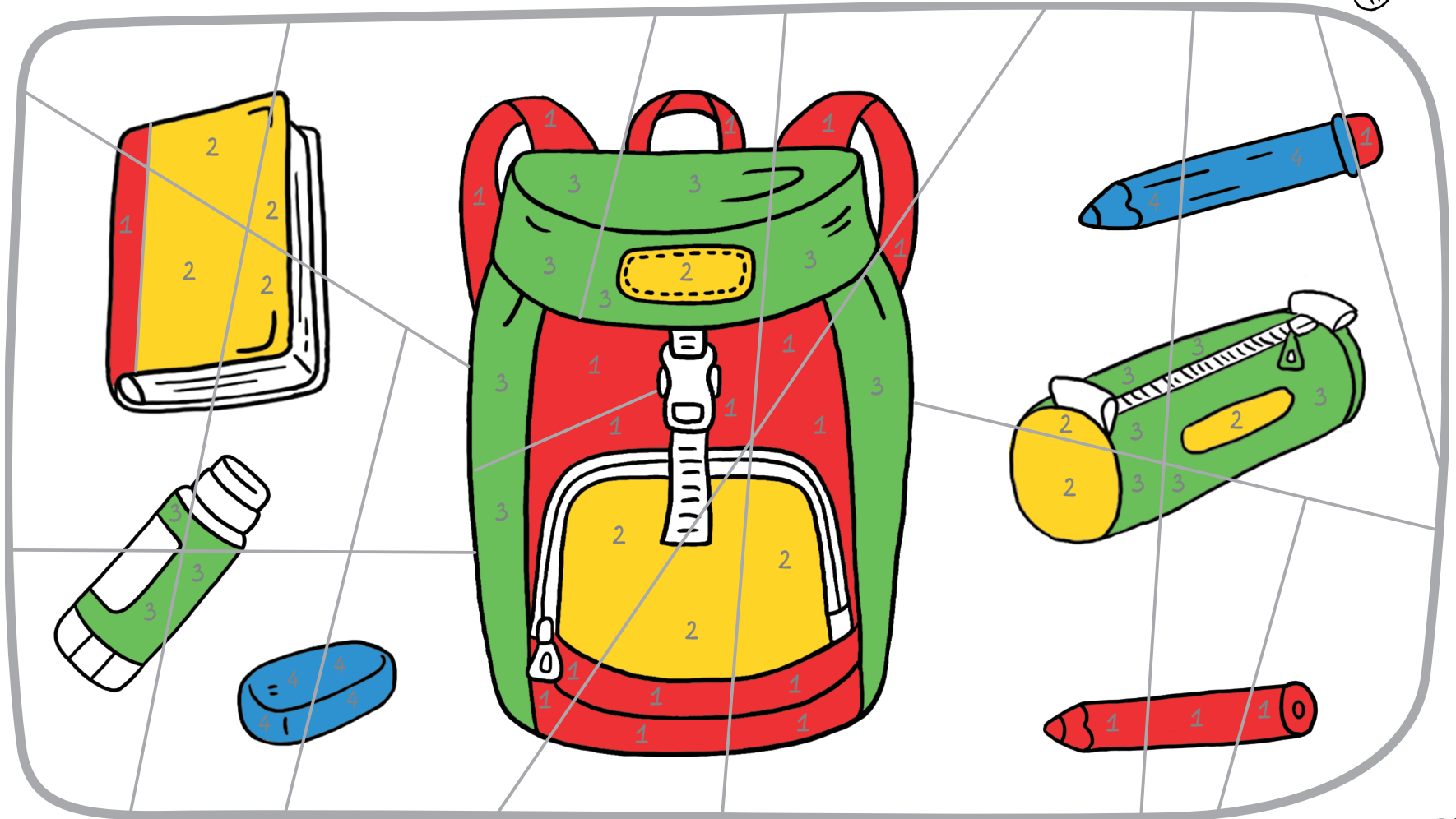
2

1

2

3

4





1

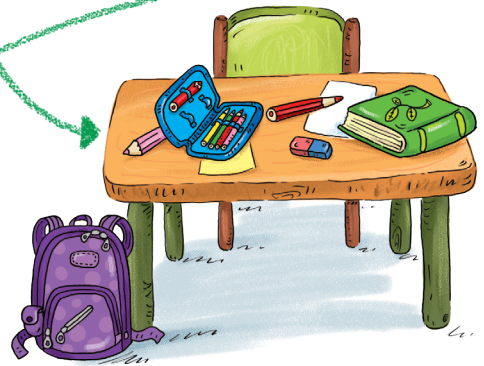
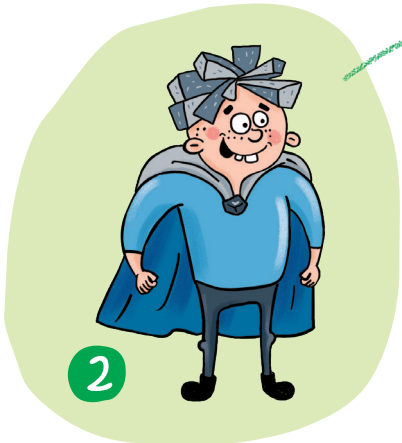


- 1
- 2
- 3
- 4
- 5
- 6
- 7



2B Forest School

2  

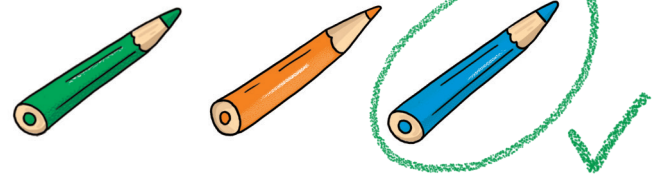




1



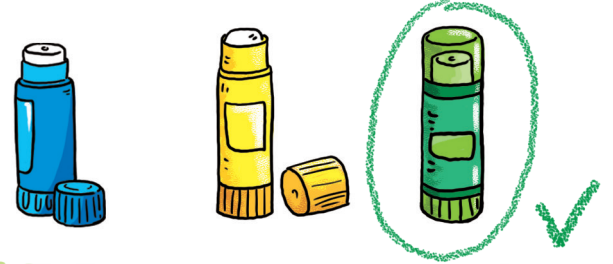
1



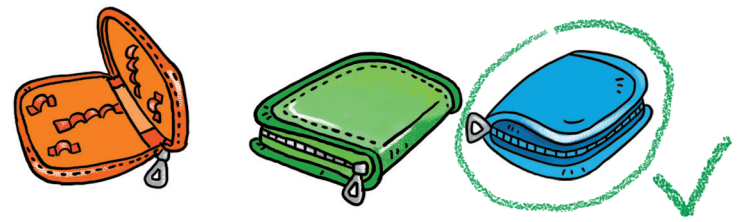
2



3



4



5



6





2C Forest School

2  



